

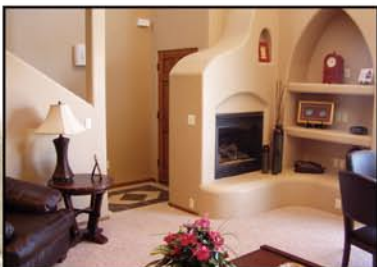
PRICELESS LIFESTYLE AT AN AFFORDABLE PRICE

Prices from the mid \$150,000s to the \$240,000s

Swimming Open Spaces Activity Trails Gated Privacy
Ideal Location Smart, Space-Saving Designs Low Maintenance

Last year in the new neighborhood of The Pueblos at Alameda Ranch more than two dozen leading local builders started scores of custom homes on quarter-acre lots surrounded by ample open space and with access to such planned amenities as swimming pools, parks, tennis courts, and activity trails.

Now some of these same builders have completed a unique group of custom town homes in The Pueblos that share all of the same neighborhood amenities but with not-so-large home designs.



EXCLUSIVE CUSTOM TOWN HOMES

TOWN HOME FEATURES:

- Four floor plans available
- One and two bedroom floor plans
- Homes sized from 1,109 sq. ft. to 1,479 sq. ft.
- Prices starting at \$154,500

TOWN HOME AMENITIES:

- Beautiful southwest styling
- Private courtyards
- Exquisite tile & wood craftsmanship
- Mountain and desert views available

Please Call Our Agents and Make an Appointment to See Our Furnished Models



Derek Graham
575.639.4590



Bernice Holguin
575.312.0327



April Casanova
575.650.0099

141 N. Roadrunner Parkway, Suite 141
Las Cruces, NM 88011 Office 575.647.0123

www.brightviewland.com/townhome.htm